



METROPLAN

GREATER ↑ FLAGSTAFF

Transportation Alternatives: Safe Routes to School (SRTS) Infrastructure Project

Preproposal Meeting
October 1, 2024

Travel Demand Management Safe Routes To School Programming

Safe Routes to School (SRTS) programs:

- ✓ Improve the safety of all pedestrians and bicyclists
- ✓ Benefit the environment
- ✓ Support Climate action goals
- ✓ Increase quality of life in the community
- ✓ Decrease traffic congestion and vehicle emissions
- ✓ Provide opportunities for people to become more physically active
- ✓ Rely less on motor vehicles





METROPLAN
GREATER † FLAGSTAFF

Pine Cliff Left Turn – Feasibility Study



Existing road layout – right in, right out

- Need
- Current Conditions & Problem
- Public comment



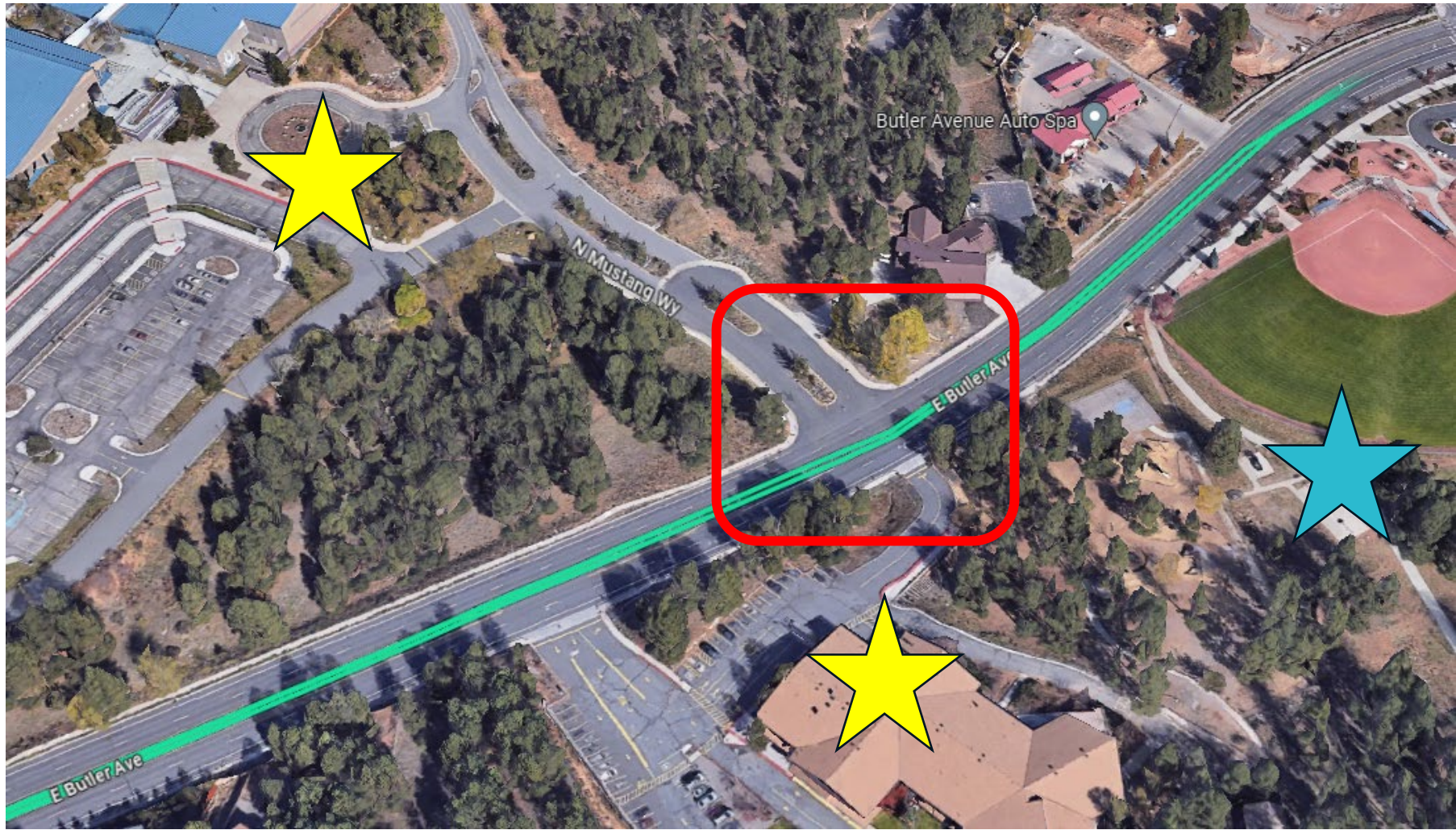
Pine Cliff Left Turn – Scope of Work

- Study a left turn from Pine Cliff Drive onto Forest Avenue to facilitate left turn bus movements
- Several feasible scenarios to be developed – Concept drawings (15% design)
- Future task order for 30% design, depending on outcome of this task order
- No public outreach required for feasibility study – technical study



METROPLAN
GREATER † FLAGSTAFF

Mustang Wy & Butler Ave



Sinagua High School

Crash Data 2017-2023

Legend for Crashes:

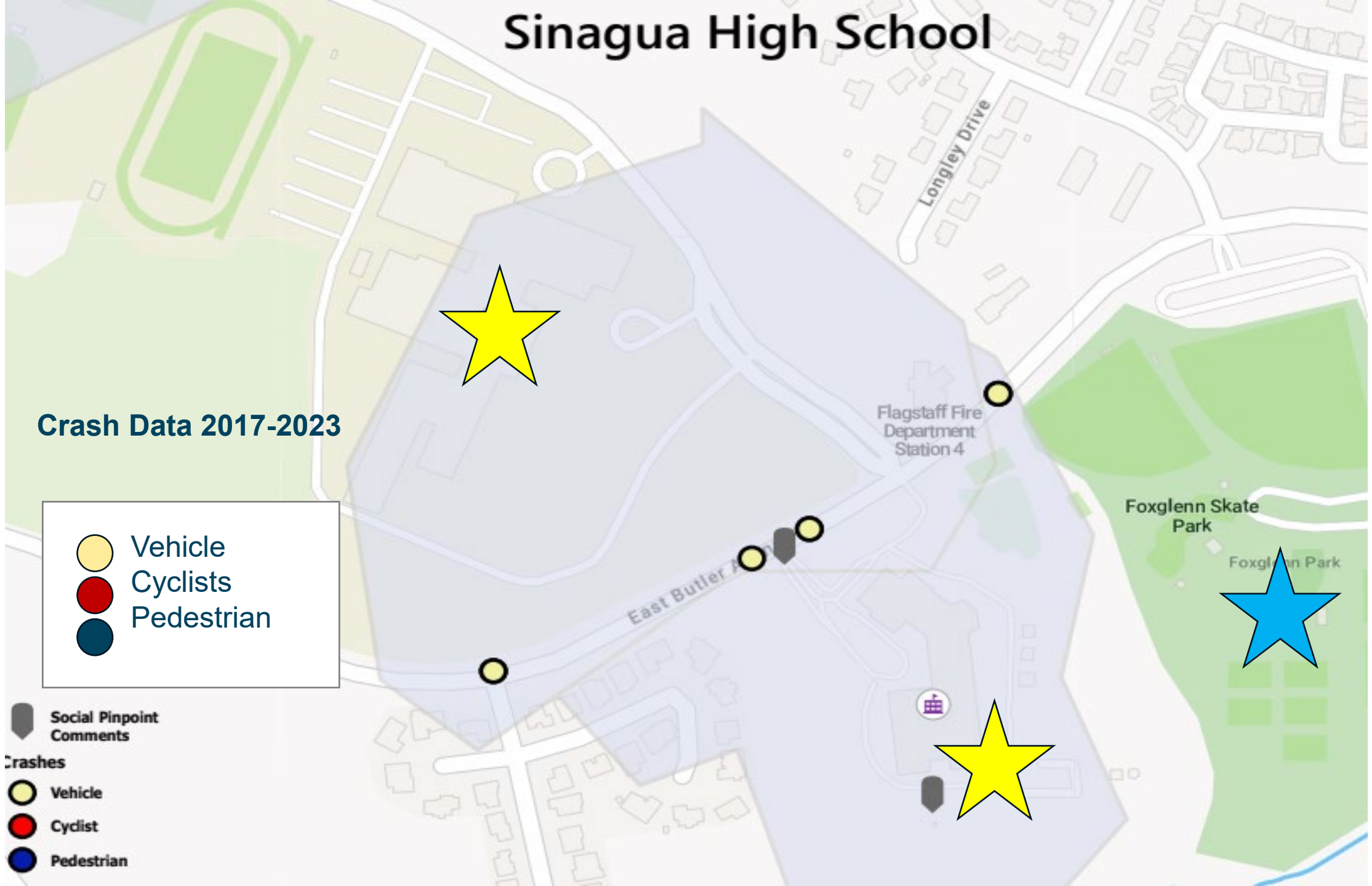
- Vehicle (Yellow circle)
- Cyclists (Red circle)
- Pedestrian (Dark Blue circle)

Legend for Social Pinpoint Comments:

- Social Pinpoint Comments (Grey arrow icon)

Crashes Legend:

- Vehicle (Yellow circle)
- Cyclist (Red circle)
- Pedestrian (Dark Blue circle)





METROPLAN
GREATER FLAGSTAFF

Fourth St & Cedar/Lockett

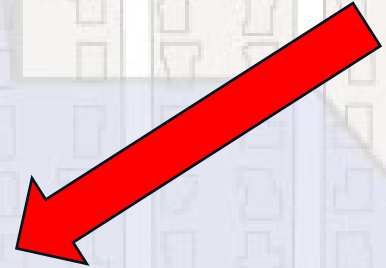


Mount Elden Middle School

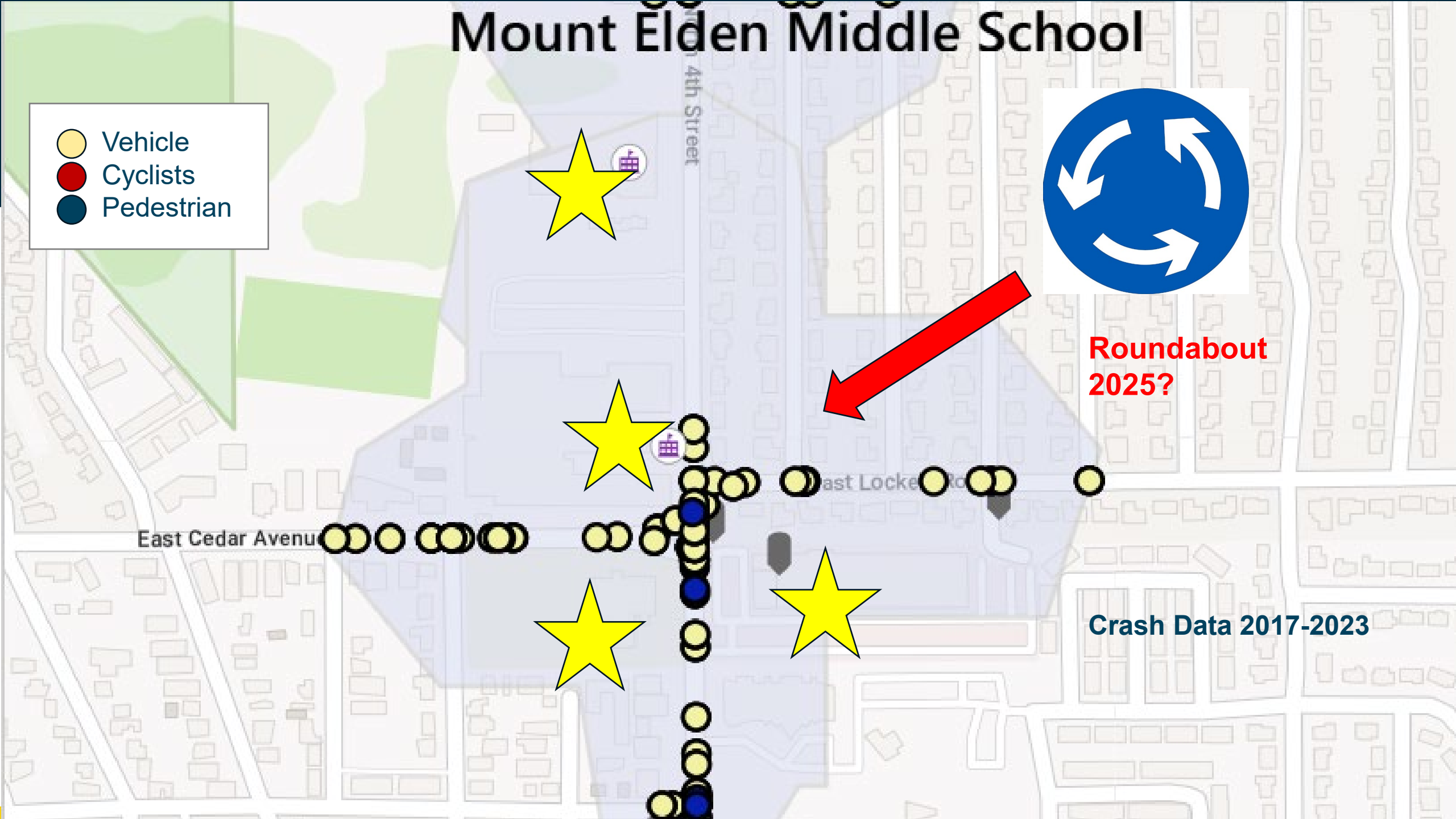
- Vehicle
- Cyclists
- Pedestrian

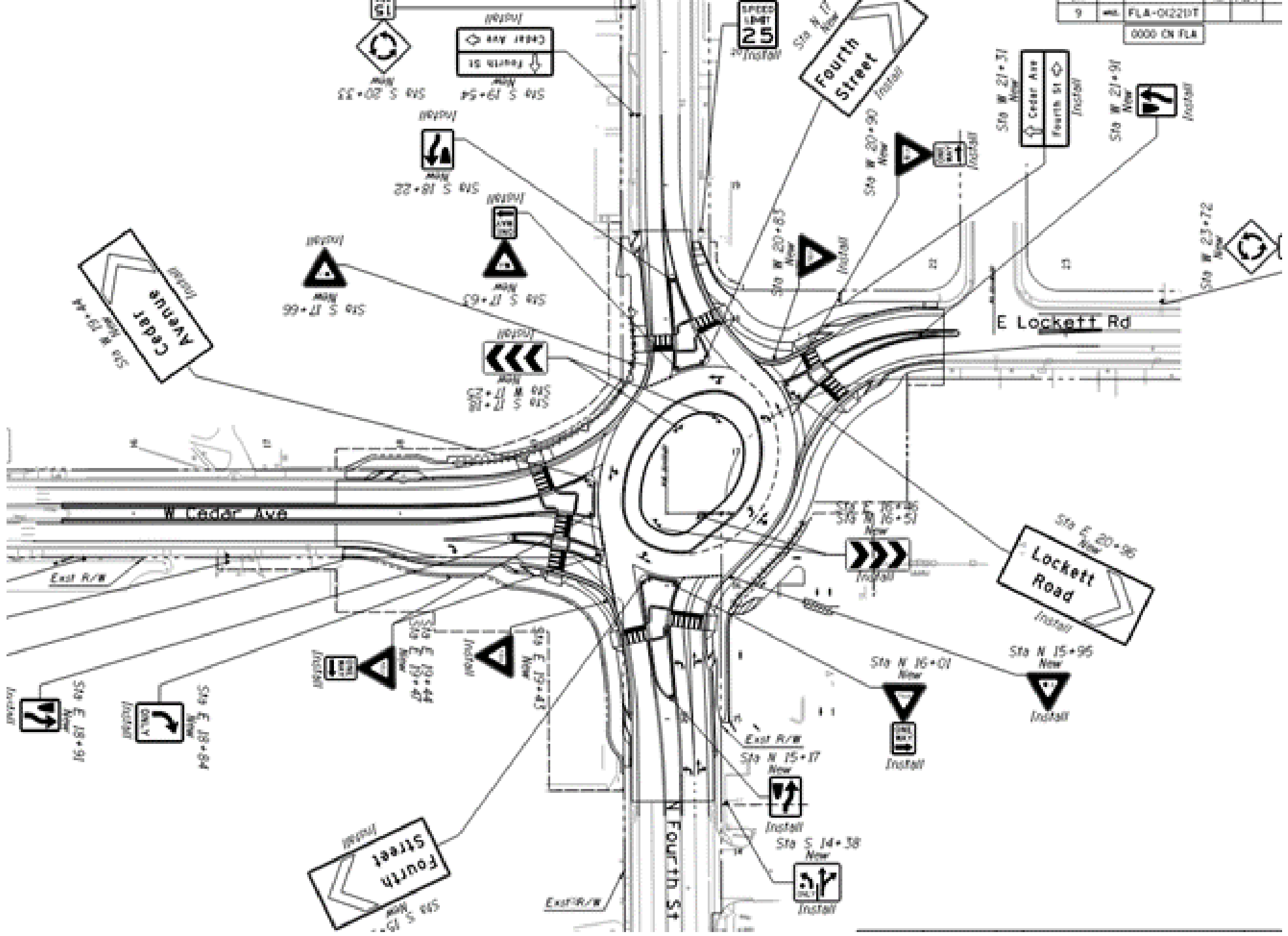


Roundabout
2025?



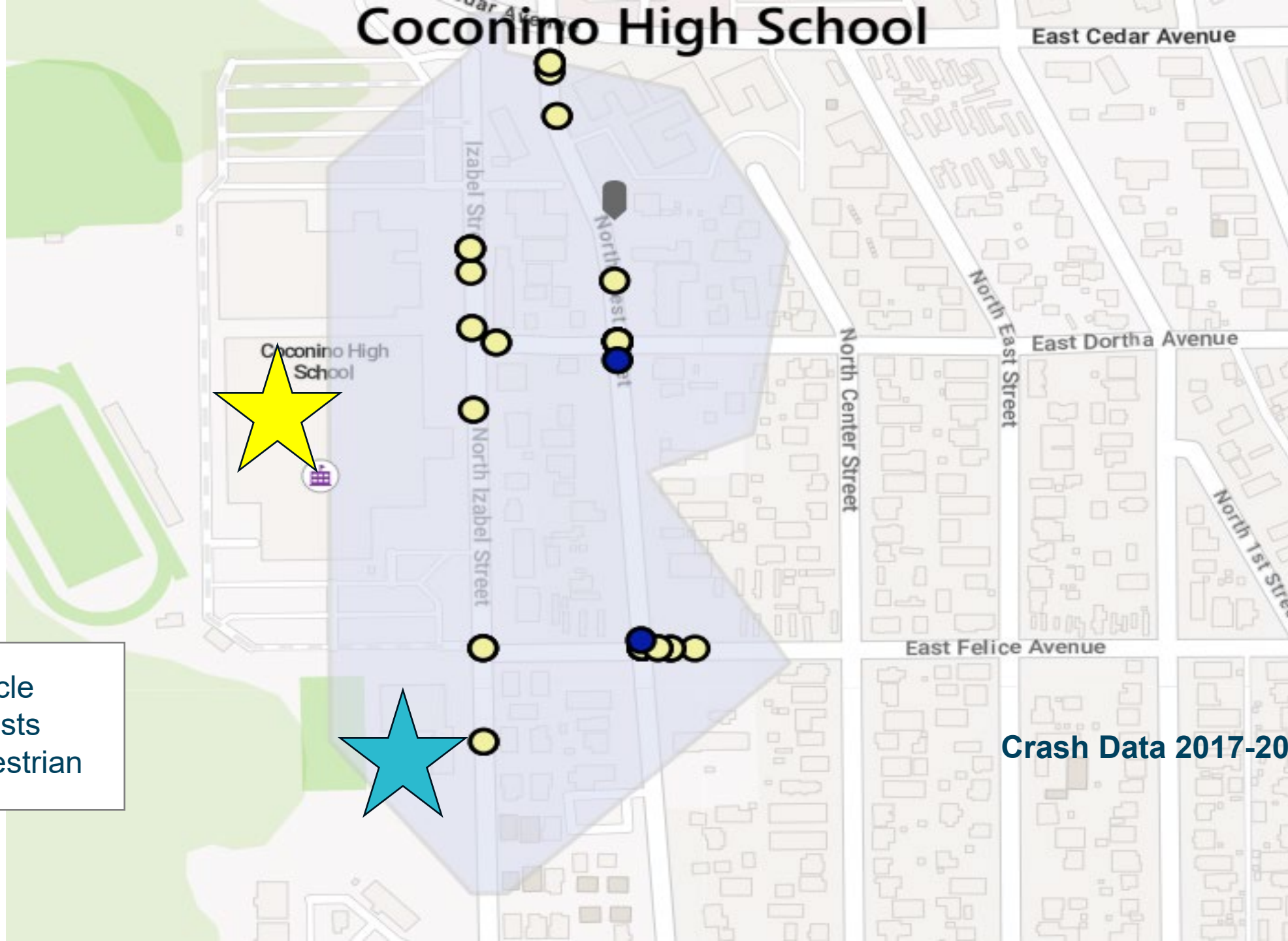
Crash Data 2017-2023





FLA-042210T
0000 CN FLA

Coconino High School



- Vehicle
- Cyclists
- Pedestrian

Crash Data 2017-2023



METROPLAN

GREATER ↑ FLAGSTAFF

Questions?

planning@metroplanflg.org